

For updated version, please click on
<http://ocw.ump.edu.my>

COMPUTER PROGRAMMING

DECISION INSTRUCTION – 3

by
LIM KAR SING

FACULTY OF CIVIL ENGINEERING & EARTH RESOURCES
UNIVERSITI MALAYSIA PAHANG

limks@ump.edu.my

Select Case Block

- A decision-making structure that simplifies choosing among several actions.
- Avoids complex nested If constructs.
- If blocks make decisions based on the truth value of a condition. Select Case choices are determined by the value of an expression called a **selector**.

Select Case Terminology

Each of the possible actions is preceded by a clause of the form

Case *valueList*

where *valueList* itemizes the values of the **selector** for which the action should be taken.

Select Case Syntax

The general form of the Select Case block is

```
Select Case selector
  Case valueList1
    action1
  Case valueList2
    action2
  Case Else
    action of last resort
End Select
```

Rules for Select Case

Each value list contains one or more of the following types of items separated by commas.

1. a literal
2. a variable
3. an expression
4. an inequality sign preceded by $!$ and followed by a literal, variable, or expression
5. a range given in the form a To b , where a and b are literals, variables, or expressions.

Block Scope

- A variable declared inside an If or Select Case block has **block scope**.
- The variable cannot be referred to outside of the block.

Input via User Selection

- Using a List Box for Input
- Group Box Control
- Using Radio Buttons for Input
- Using Check Boxes for Input
- Events Raised by Selections

The Three Types of Controls Used for Selection

The image shows a window titled "Questionnaire" with three main sections for data entry:

- Major:** A list box containing the following options: Biological Science, Business (highlighted), Computer Science, Education, English, Fine Arts, History, Humanities, Mathematics, Physical Sciences, and Social Sciences. A green label "list box" with a blue arrow points to this section.
- Year:** A group of radio buttons with the following options: Freshman, Sophomore (selected), Junior, and Senior. A green label "radio buttons" with a blue arrow points to this section.
- Languages Studied:** A group of check boxes with the following options: Visual Basic (checked), Java, C++, C, C#, and Python (checked). A green label "check boxes" with a blue arrow points to this section.

At the bottom center of the window is a blue button labeled "Record Data".

Fill a List Box at Design Time via its String Collection Editor

Tasks button

ListBox Tasks

Use Data Bound Items

Unbound Mode

Edit Items...

String Collection Editor

Enter the strings in the collection (one per line):

PhD
Master

Type in the string values

click here to invoke string collection editor

String Collection Editor

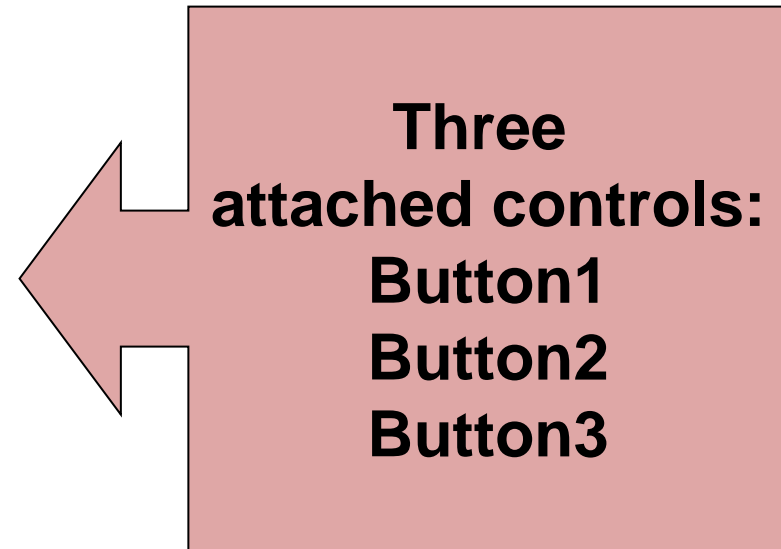
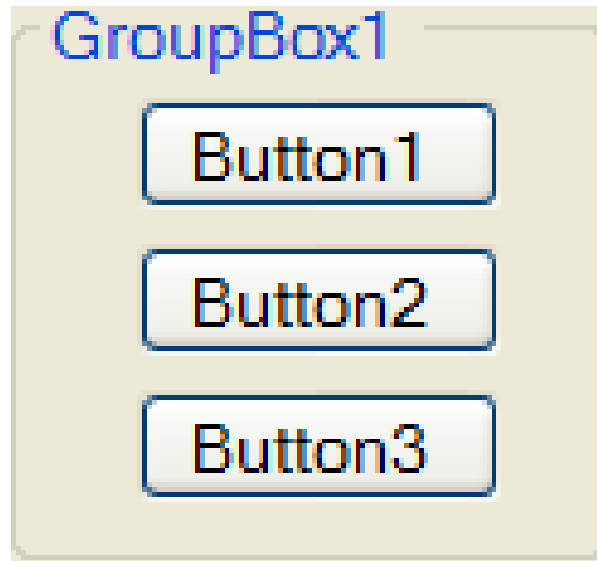
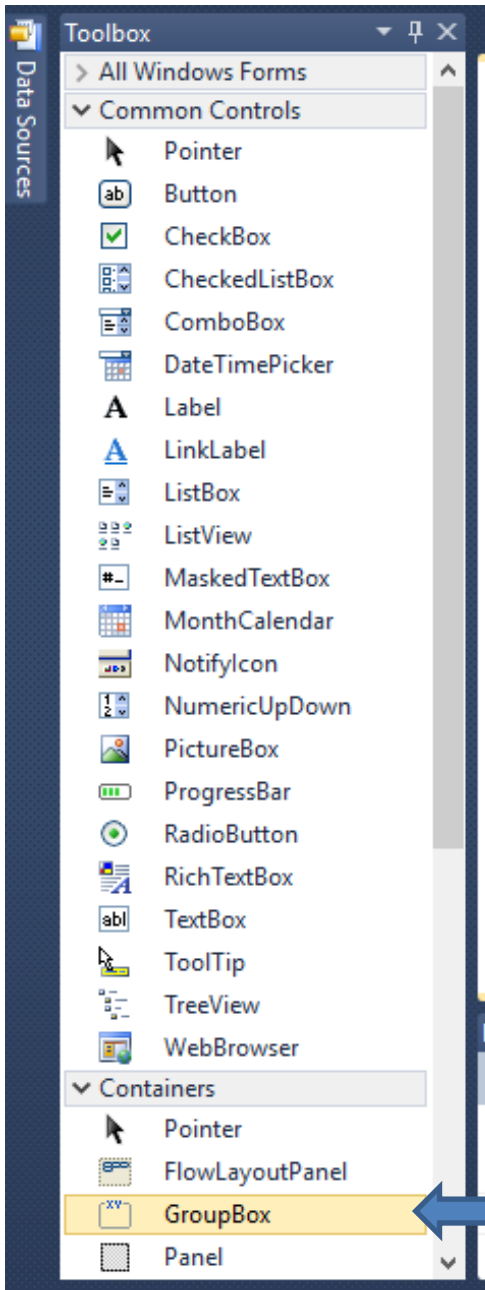
- Fill by direct typing or by copying and pasting from a text editor or a spreadsheet.

PhD
Master
Degree
Diploma
Certificate
SPM
PMR

The Group Box Control

- Group boxes are passive objects used to group other objects together.
- When you drag a group box, the attached controls follow as a unit.
- To attach controls to a group box, create the group box and then place or drag the controls into the group box.

Group Box Example



Radio Button Properties

- To determine if a button is selected

`radioButton.Checked`

has value `True` if button is selected.

- To select a radio button

`radioButton.Checked = True`

Note: At most one radio button in a group box can be selected at one time.

The Check Box Control

- Consists of a small square and a caption
- Presents the user with a Yes/No choice
- During run time, clicking on the check box toggles the appearance of a check mark.
- Checked property has value True when check box is checked and False when not
- CheckedChanged event is raised when the user clicks on the check box
- Several check boxes in a group can be checked at the same time.

Events Raised by a Selection

- SelectedIndexChanged – raised when a new item of a list box is selected
- CheckedChanged - raised when the user clicks on an unchecked radio button or a check box; that is, when the value of the Checked property is changed.