

Faculty of Electrical & Electronics Engineering
BEE1133 Circuit Analysis I

Name: _____

ID: _____

Section: _____

Date: _____

(Failed to complete all the particulars above will be penalized 2 marks)

QUIZ 1

Mapping CO, PO: CO1,PO1

CO1: Attribute the basic concepts of electrical quantities by using basic circuit laws (Ohm's law and Kirchhoff's law) and simplification of resistive circuits

PO1: Acquire and apply knowledge of sciences and electrical & electronics engineering fundamentals.

Use voltage division and resistance combination to find v_x in the circuit shown in Figure 1.

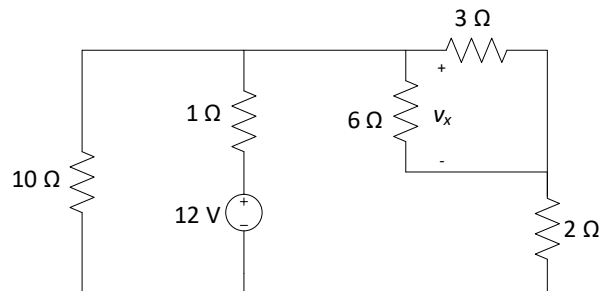


Figure 1

[10 marks]