

CHAPTER 6

Multiple Tables , Sub-queries and SET Operators

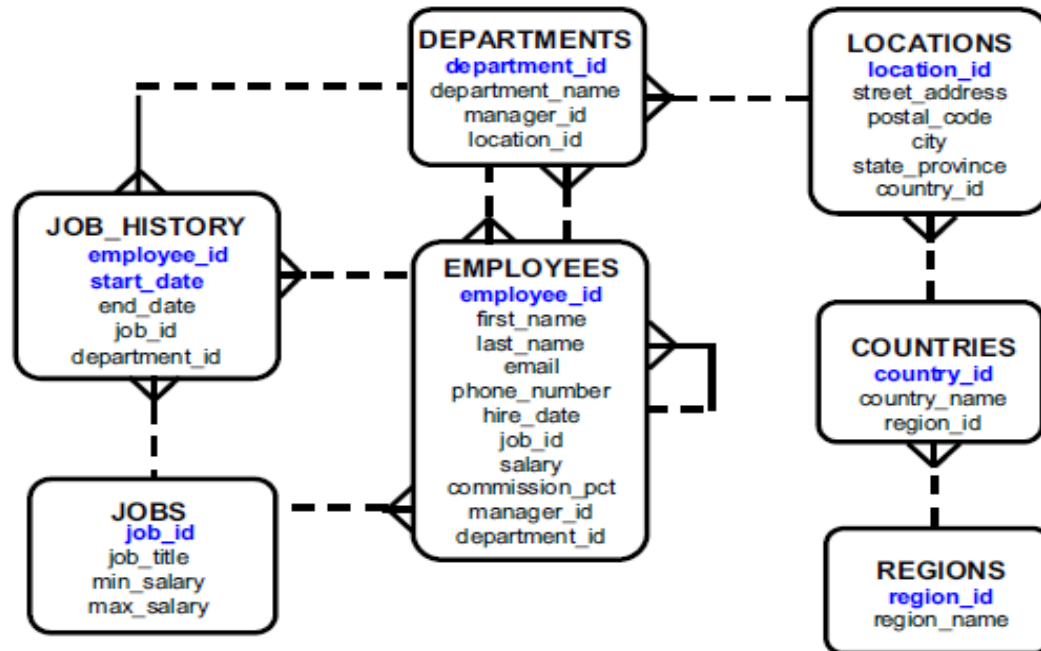
EXERCISES



The HR Schema (sample Database from Oracle)

Exercise questions are based on HR database schema available in Oracle.

HR Schema



Lab Exercises 6.1

Write SQL statements to display report as instructed by the followings:



OER Structured Query Language by Ruzaini Abdullah Arshah (editor) work is under licensed Creative Commons Attribution-NonCommercial-NoDerivatives 4.0 International License.

Lab Exercises 6.2

Write SQL statements to display report as instructed by the followings:



OER Structured Query Language by Ruzaini Abdullah Arshah (editor) work is under licensed Creative Commons Attribution-NonCommercial-NoDerivatives 4.0 International License.

Lab Exercises 6.3

Write SQL statements to display report as instructed by the followings:



OER Structured Query Language by Ruzaini Abdullah Arshah (editor) work is under licensed Creative Commons Attribution-NonCommercial-NoDerivatives 4.0 International License.

References

Oracle Database 11g: SQL Fundamentals I, Oracle University at:
<http://education.oracle.com>



OER Structured Query Language by Ruzaini Abdullah Arshah (editor) work is under licensed Creative Commons Attribution-NonCommercial-NoDerivatives 4.0 International License.